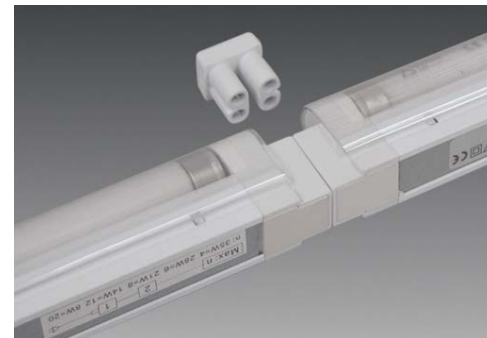


Basic Line



	Lamp output	Length L
Basic Line BL 8	8 Watt	340 mm
Basic Line BL 14	14 Watt	600 mm
Basic Line BL 21	21 Watt	900 mm
Basic Line BL 28	28 Watt	1200 mm
Basic Line BL 35	35 Watt	1500 mm

Mounting arrangement with admissible clearances

BL CS Standard mounting

max 40

min 60

Mounting

Mains supply

BL 43

BLB 43

Connector rigid BL K

IN

OUT

OUT

Connector flexible

BLB 46

BL 46

IN

OUT

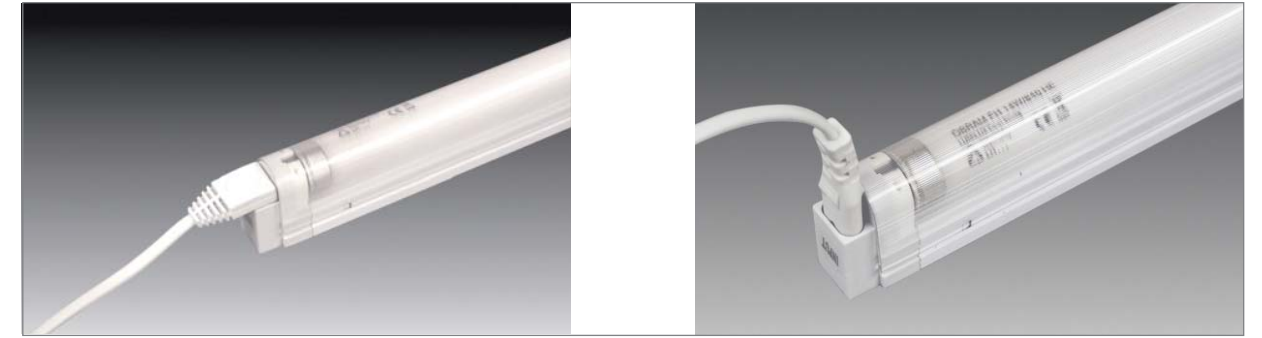
25

8 W = 340

14 W = 600

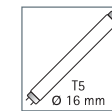
Total lamp output in one strip light maximum 280 W

Basic Line



Compact luminaire with aluminium casing for T5 Lamp

- Application:** universally suitable for shop-fittings, counters, shelving units, display cabinets, use behind lighting screens etc.
- Connection:** 220 – 240V / 50 – 60Hz
- Lamp:** extremely long-life T5 (ø 16mm) high efficiency fluorescent lamp, ø life 20,000 hours
- Energy efficiency:** very good, 86 – 94lm/W (14 – 35W)
- Colour rendering:** good, Ra = 80 – 89
- Special features:** flicker-free instant start and energy-saving due to an electronic ballast (cold start electronic ballast optimised for switching on/off max. 3-4 times a day); plexiglass cover (splinter shield) makes product ideal for use in the food industry; rigid connectors for minimum spacing between luminaires; vertical plug-in system allows later removal from the strip light.



Article-No.	Description	Illustration	Features	Approx. weight
202 220 110 00	Basic Line BL 340mm 8W		<ul style="list-style-type: none"> • please order T5 lamps (from page 142) separately • plexiglass cover see below 	230 g
202 220 120 00	Basic Line BL 600mm 14W			360 g
202 220 130 00	Basic Line BL 900mm 21W			490 g
202 220 140 00	Basic Line BL 1200mm 28W			640 g
202 220 150 00	Basic Line BL 1500mm 35W			800 g
215 140 318 01	BL 43/1800 mains cable with Euro plug 1,8m		<ul style="list-style-type: none"> • horizontal luminaire connection 	95 g
215 140 601 01	BL 46/ 150 connecting cable 0,15m			20 g
215 140 603 01	BL 46/ 300 connecting cable 0,3m			30 g
215 140 606 01	BL 46/ 600 connecting cable 0,6m			40 g
215 140 612 01	BL 46/1200 connecting cable 1,2m			80 g
215 140 618 01	BL 46/1800 connecting cable 1,8m			120 g
215 141 318 01	BLB 43/1800 mains cable with Euro plug 1,8m		<ul style="list-style-type: none"> • vertical luminaire connection 	95 g
215 141 601 01	BLB 46/ 150 connecting cable 0,15m			20 g
215 141 603 01	BLB 46/ 300 connecting cable 0,3m			30 g
215 141 606 01	BLB 46/ 600 connecting cable 0,6m			40 g
215 141 612 01	BLB 46/1200 connecting cable 1,2m			80 g
215 141 618 01	BLB 46/1800 connecting cable 1,8m			120 g
215 140 000 01	BLK connecting coupling			10 g
203 012 501 01	BL plexiglass cover 8W			20 g
203 012 502 01	BL plexiglass cover 14W		45 g	
203 012 503 01	BL plexiglass cover 21W		60 g	
203 012 504 01	BL plexiglass cover 28W		90 g	
203 012 505 01	BL plexiglass cover 35W		110 g	