

Flat Recessed LED Luminaire

R 68-LED / Q 68-LED



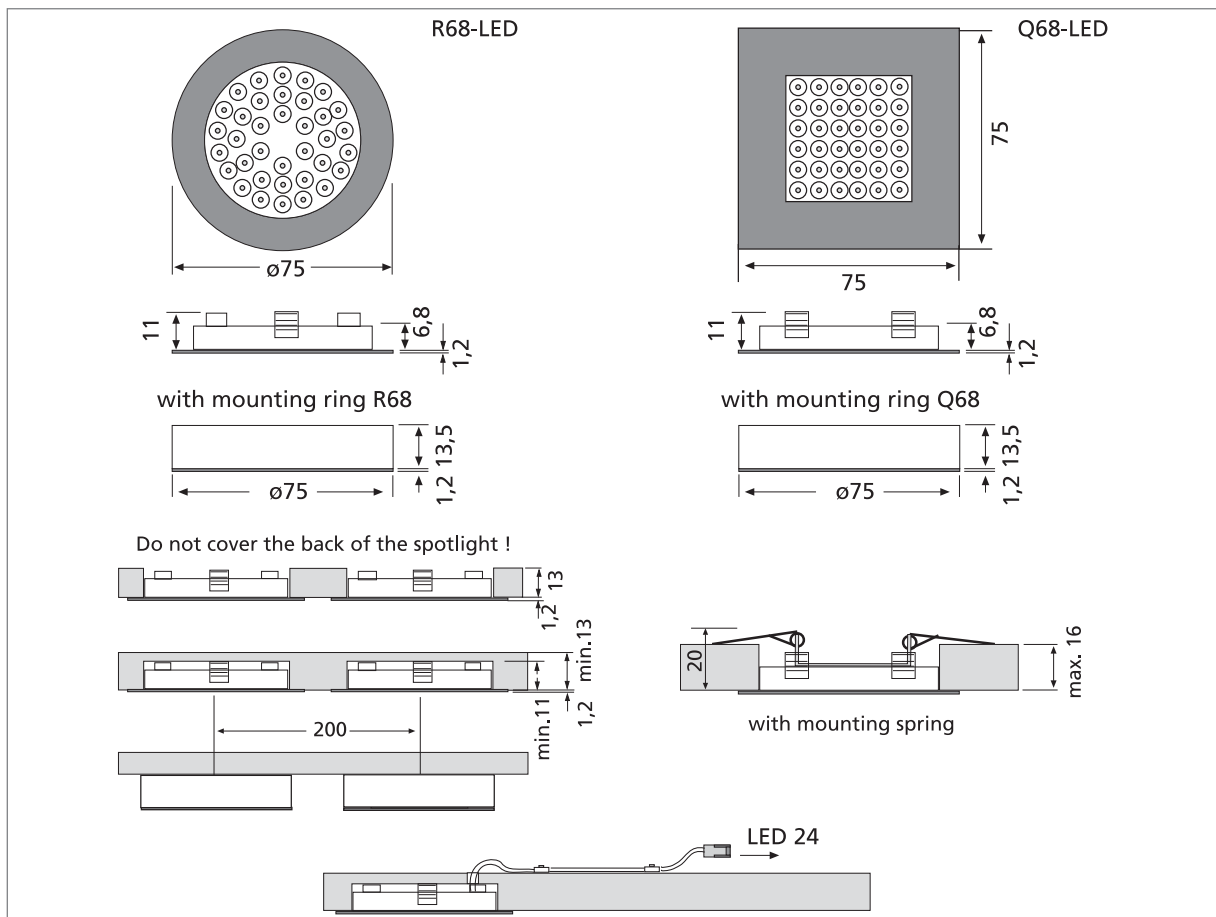
Hera[®]
Light Years Ahead.

R 68-LED / Q 68-LED

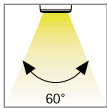
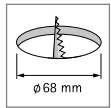
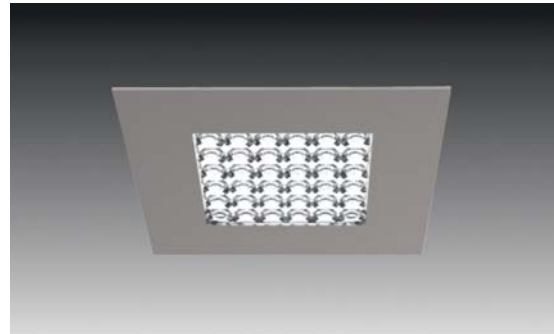


Flat Recessed LED Luminaire for the 68 Cut-out

- Application:** energy-saving recessed spotlight for kitchen, bathroom and shop
- Connection:** LED-transformer DC 24 V
- Lamp:** extremely long-life 36 x 70mW LED, Ø life 30,000 hours
- Energy efficiency:** good, ww: 45lm/W; cw: 50lm/W
- Colour rendering:** good, ww: Ra = 90; cw: Ra = 80
- Special features:** low power consumption; no UV rays; flush mounting in 16mm panels.



R 68-LED / Q 68-LED



Article No.	Description	Illustration	Features	Approx. weight
610 012 602 06 *	R 68-LED 2,5W ww matt chrome		<ul style="list-style-type: none"> colour appearance ww (warm white) supply cable 2,5m with LED 24 plug 	80 g
610 012 602 08 *	R 68-LED 2,5W ww stainless steel		80 g	
610 012 601 06 *	R 68-LED 2,5W cw matt chrome		<ul style="list-style-type: none"> colour appearance cw (cool white) supply cable 2,5m with LED 24 plug 	80 g
610 012 601 08 *	R 68-LED 2,5W cw stainless steel		80 g	
610 549 038 02 *	set of 3 R 68-LED 2,5W ww stainless steel		<ul style="list-style-type: none"> incl. transformer LED 24/15W DC 24V colour appearance ww (warm white) supply cable 2,5m with LED 24 plug 	410 g
610 549 058 02 *	set of 5 R 68-LED 2,5W ww stainless steel		570 g	
205 010 211 06 *	Mounting ring R 68 matt chrome		<ul style="list-style-type: none"> incl. screw 	12 g
205 010 211 08 *	Mounting ring R 68 stainless steel		12 g	
610 012 622 06 *	Q 68-LED 2,5W ww matt chrome		<ul style="list-style-type: none"> colour appearance ww (warm white) supply cable 2,5m with LED 24 plug 	85 g
610 012 622 08 *	Q 68-LED 2,5W ww stainless steel		85 g	
610 012 621 06 *	Q 68-LED 2,5W cw matt chrome		<ul style="list-style-type: none"> colour appearance cw (cool white) supply cable 2,5m with LED 24 plug 	85 g
610 012 621 08 *	Q 68-LED 2,5W cw stainless steel		85 g	
610 549 238 02 *	set of 3 Q 68-LED 2,5W ww stainless steel		<ul style="list-style-type: none"> incl. transformer LED 24/15W DC 24V colour appearance ww (warm white) supply cable 2,5m with LED 24 plug 	425 g
610 549 258 02 *	set of 5 Q 68-LED 2,5W ww stainless steel		595 g	
205 010 212 06 *	Mounting ring Q 68 matt chrome		<ul style="list-style-type: none"> incl. screws 	15 g
205 010 212 08 *	Mounting ring Q 68 stainless steel		15 g	
615 000 301 01	Mounting spring ARF 68/78/Q		<ul style="list-style-type: none"> for mounting in lightweight design ceilings 	24 g
215 300 610 01	LED 24 connecting cable 1m			9 g
215 300 625 01	LED 24 connecting cable 2,5m		22 g	
206 040 011 01	Transformer LED 24/15W DC 24V 12-way distributor		<ul style="list-style-type: none"> mains cable 2m with Euro plug for 1 – 12 luminaires 	167 g
615 003 007 09	Transformer LED 24/15W DC 24V dimmable (Radio Controller)		<ul style="list-style-type: none"> mains cable 2m with Euro plug with radio telecontrol to dimm and to switch 	240 g
615 003 007 02	Transformer LED 24/15W DC 24V dimmable (1-10V)		<ul style="list-style-type: none"> mains cable 2m with Euro plug dimmable (1-10V) dimmer cable 0,3m with Mini AMP-plug 	200 g
506 180 401 01	Mounting dimmer switch (1-10V)		<ul style="list-style-type: none"> dimmer cable 2m with Mini AMP-socket 	95 g

* available from May

Hera[®]

Hera GmbH & Co. KG

Dieselstraße 9 · D-32130 Enger

Postfach 440 · D-32124 Enger

Telefon: +49 (0) 5224 911-0

Telefax: +49 (0) 5224 911-215

mail@hera-online.de

www.hera-online.de

Subject to technical changes without prior notice.

Position as per 01/2010